

Drawstring Bag



Finished size: Height: 7 $\frac{1}{2}$ "

Width: 4"

Depth: 4"

Read all the instructions before you begin.

Materials:

- 2 pieces - 6"x8 ½" (15x22 cm) of main fabric
- 2 pieces - 4"x8 ½" (10x22 cm) of contrast fabric
- 2 pieces - 11"x8 ½" (28x22cm) of lining fabric
- 2 pieces - 6"x8 ½" (15x22 cm) of light to medium weight interfacing
- 2 pieces - 4"x8 ½" (10x22 cm) of light to medium weight interfacing
- 40" (100 cm) of 1/8" (3mm) cord or 3/8" (1 cm) wide ribbon
- 2 beads with a wide opening (optional)
- Sewing Machine
- Cutting Mat, Ruler and Rotary Cutter
- General Sewing Supplies

All seam allowances are ¼" (6 mm) unless otherwise stated.

If you want to only use one fabric, cut two pieces that are 9 ½"x8 ½" (24x22cm) of the main fabric and omit the contrast fabric. Cut the interfacing the same size as the main fabric pieces.

Instructions:

Outer bag:

Iron on interfacing on main and contrasting fabric pieces.



Sew one main fabric piece to one contrast fabric piece along the 8 ½" (22cm) edge. Think about the orientation of the fabric, the contrast fabric is the base of the bag. Press the seam towards the contrast fabric and top stitch on the contrast fabric close to the seam.

Sew the side seams with the two pieces right sides together and press the seams apart.

Mark the middle point on both bottom edges. Fold the bottom edge right sides together so the middle points and side seams meet. (see picture).

Sew across the bottom edge through all layers.

Turn to the right side.



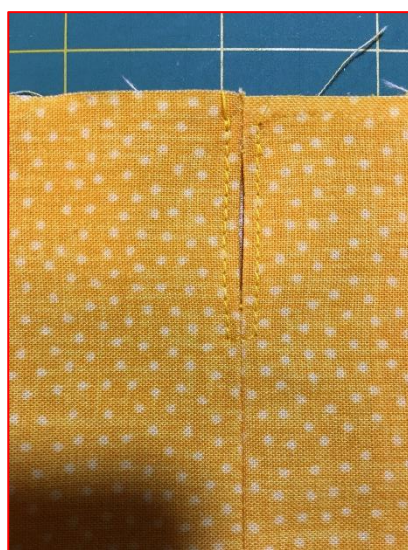
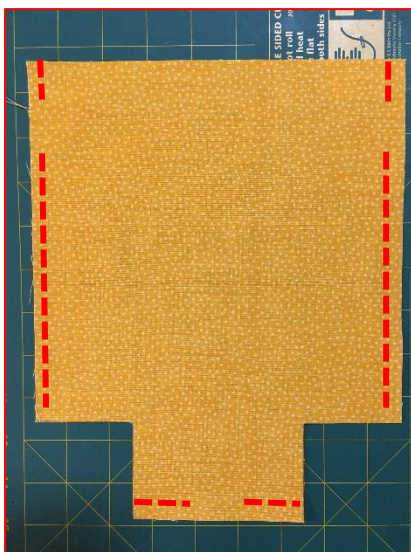
Lining:

Cut out two 2" squares from the bottom corners on the lining pieces.

Sew the side and bottom seams together but leave a 3" opening in the bottom seam and a 1" opening in each side seam $\frac{1}{2}$ " from the top.

Press the seam allowances open as much as possible. Top stitch around the opening on each side of the lining.

Match side and bottom seams at each corner and stitch.



Finish:

Turn the main bag right side out and place it inside the lining so the right sides are together and top edges are even and side seams meet. Stitch around top edge and turn to the right side through the opening in the bottom seam of the lining. Sew this opening closed by hand or machine.



Pull the lining and main piece apart and press the seam allowance towards the lining. Push the lining inside the bag and fold the lining in the middle of the side seam openings. This will be the top edge of the bag. Press the top edge and top stitch all the way around close to the seam to form a casing.



Cut the cord/ribbon in half and thread one piece through the casing all the way around the bag with the help of a safety pin. Repeat with the second cord/ribbon in the opposite opening. Tie the ends on each ribbon together. If using beads put the ends through the bead before tying the knot. When pulling the knots in opposite directions the bag will close.

It is easy to adjust the pattern to make any size bag. Just cut the lining $1\frac{1}{2}$ " taller than the main bag and the ribbons 4" longer than the circumference of the top of the bag. Cut the squares in the lining corners $\frac{1}{4}$ of the width of the lining pieces. Do not include seam allowance in this measurement but remember to include the $\frac{1}{4}$ " seam allowance in the rest of the measurements.

Enjoy your drawstring bags!